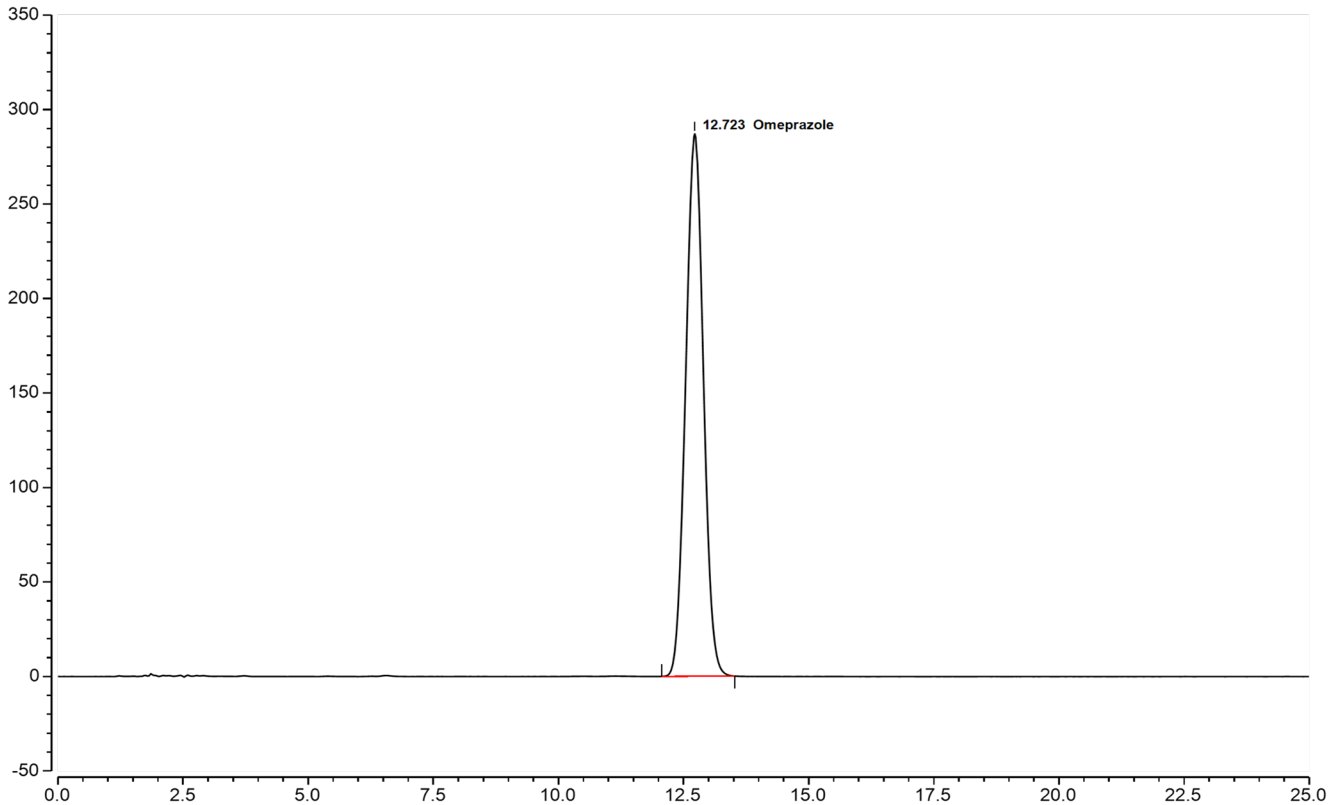




Omeprazole Assay

Endurus[®] C8 WP Classic 5 μ m 150X4.6



Test Condition

Column:

Endurus[®] C8 WP Classic 5 μ m 150X4.6

Injection: 20 μ L

Detection: UV 280 nm

Flow Rate: 0.8 mL/min

Mobile Phase: Acetonitrile and Buffer (1:3)

Buffer: Dissolve 0.725 g of monobasic sodium phosphate and 4.472 g of anhydrous dibasic sodium phosphate in 1000 mL of water. Dilute 250 mL of this solution with water to 1000 mL. If necessary, adjust with phosphoric acid to a pH of 7.6.

Diluent: Acetonitrile and 0.01 M sodium borate (1:3)

Temperature: Ambient

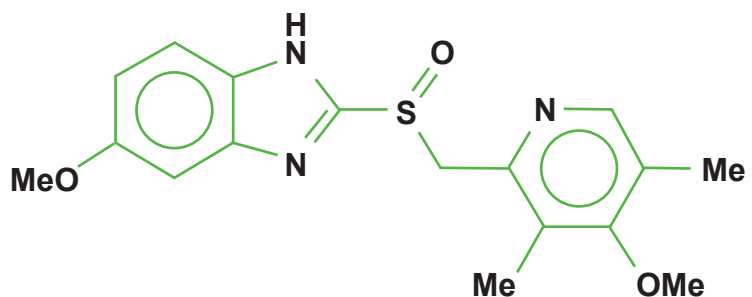
Autosampler temperature: 5 $^{\circ}$ C

Sample / Standard:

0.2 mg/mL of USP Omeprazole in Diluent

Chromatographic data

No.	Compound	Retention Time (min)	Tailing Factor	Theoretical Plates
1	Omeprazole	12.723	1.03	5987



ISO 9001
CERTIFIED

To place an order, call +91-90811 21133, or contact your local Force Scientific distributor:

Force Scientific • 207 & 210-213 The Space • Kunal Cross Road • Gotri, Vadodara, GJ 390021 • www.forcescientific.com

Endurus[®] is a registered trademark of Force Scientific.