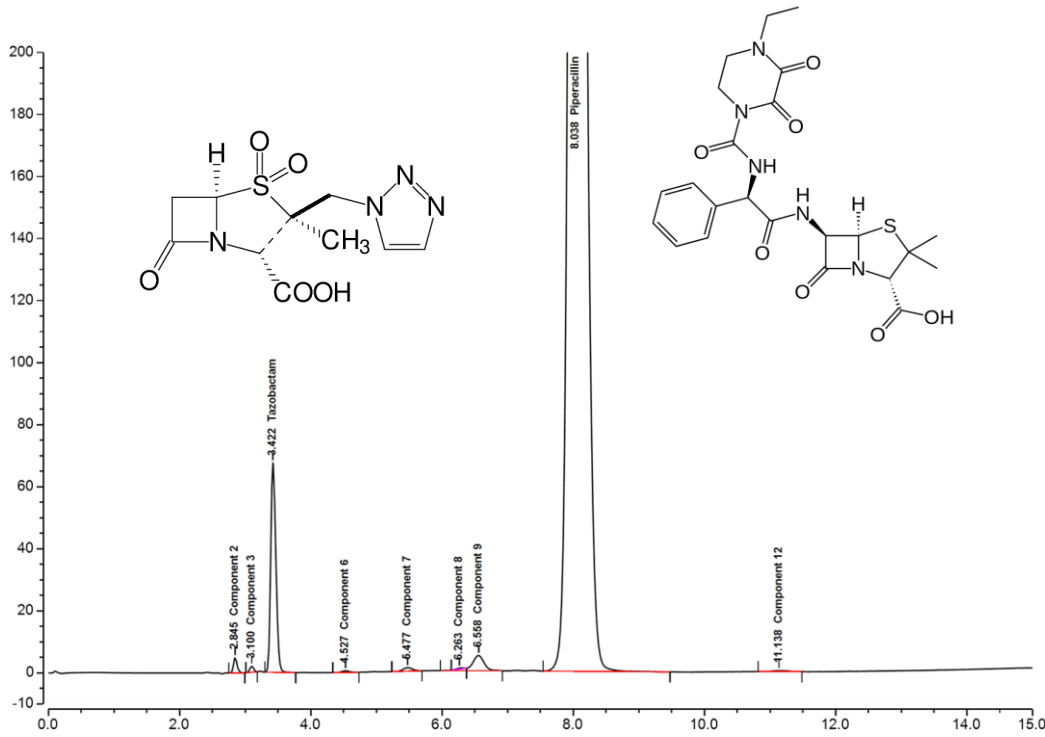




Piperacillin and Tazobactam Sodium On Endurus C18 Classic



Test Condition

(As Inhouse)

Column: Endurus[®] C18 Classic

250x4.6mm, 5 μ m

Injection: 10 μ L

Detection: UV 230 nm

Flow Rate: 1.0
mL/min

Mobile Phase: Methanol, water, Buffer, and Solution A (510:432:50:8). Adjust with phosphoric acid to a pH of 5.5.

Buffer: 27.6 g/L of monobasic sodium phosphate

Solution A: 80 mL of 40% aqueous tetrabutylammonium hydroxide diluted with water to 100 mL

Diluent: Mobile Phase

Temperature: Ambient

Autosampler temperature: 5°C

Sample preparation: 0.1 mg/mL of USP Tazobactam RS and 1 mg/mL of USP Piperacillin RS in Diluent.

Chromatographic data

No.	Compound	RT (min)	Resolution	Tailing Factor
1	Component 2	2.845	N/A	1.27
2	Component 3	3.1	2.39	1.01
3	Tazobactam	3.422	2.49	1.23
4	Component 6	4.527	6.61	0.99
5	Component 7	5.477	4.21	1.09
6	Component 8	6.263	N/A	N/A
7	Component 9	6.558	3.82	0.77
8	Piperacillin	8.038	4.33	1.21
9	Component 12	11.138	8.29	1.11