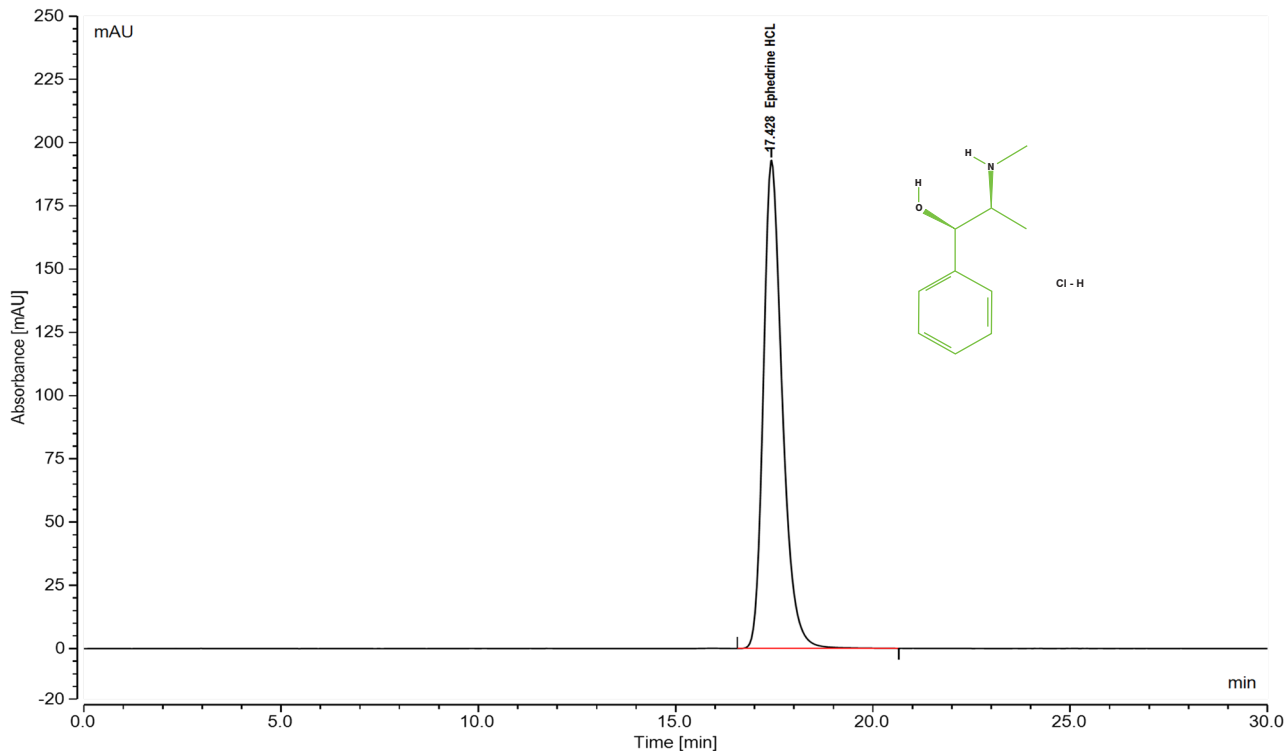




## Ephedrine HCL

### Endurus<sup>®</sup> C18 TriAlpha HP WP 5 $\mu$ m 150X4.6



#### Test Condition

(As Japanese Pharmacopoeia)

#### Column:

Endurus<sup>®</sup> C18 TriAlpha HP WP 5 $\mu$ m 150X4.6

**Injection:** 5  $\mu$ L

**Detection:** UV 254 nm

**Flow Rate:** 1.3 mL/min

**Mobile Phase:** A mixture of methanol, Buffer and perchloric acid (600:400:1)

**Diluent:** Mobile Phase

**Buffer:** Dissolve 9.16 gm of sodium-1-decane sulfonate in 1000 ml water.

**Temperature:** 30°C

Autosampler temperature: 5°C

#### Sample preparation:

Dissolve 10 mg of the substance in 10 ml in diluent.

#### Chromatographic data

| No. | Compound      | Retention Time (min) | Tailing Factor | Theoretical Plates |
|-----|---------------|----------------------|----------------|--------------------|
| 1   | Ephedrine HCL | 17.428               | 1.31           | 6786               |

Ephedrine hydrochloride is an alkylbenzene.

**IUPAC Name:** (1R,2S)-2-(methylamino)-1-phenylpropan-1-ol;hydrochloride

**Molecular Formula:** C<sub>10</sub>H<sub>16</sub>ClNO

*A phenethylamine found in EPHEDRA SINICA. PSEUDOEPHEDRINE is an isomer. It is an alpha- and beta-adrenergic agonist that may also enhance release of norepinephrine. It has been used for asthma, heart failure, rhinitis, and urinary incontinence, and for its central nervous system stimulatory effects in the treatment of narcolepsy and depression. It has become less extensively used with the advent of more selective agonists.*

ISO 9001  
CERTIFIED

To place an order, call +91-90811 21133, or contact your local Force Scientific distributor:

Force Scientific • 207 & 210-213 The Space • Kunal Cross Road • Gotri, Vadodara, GJ 390021 • [www.forcescientific.com](http://www.forcescientific.com)

Endurus<sup>®</sup> is a registered trademark of Force Scientific.