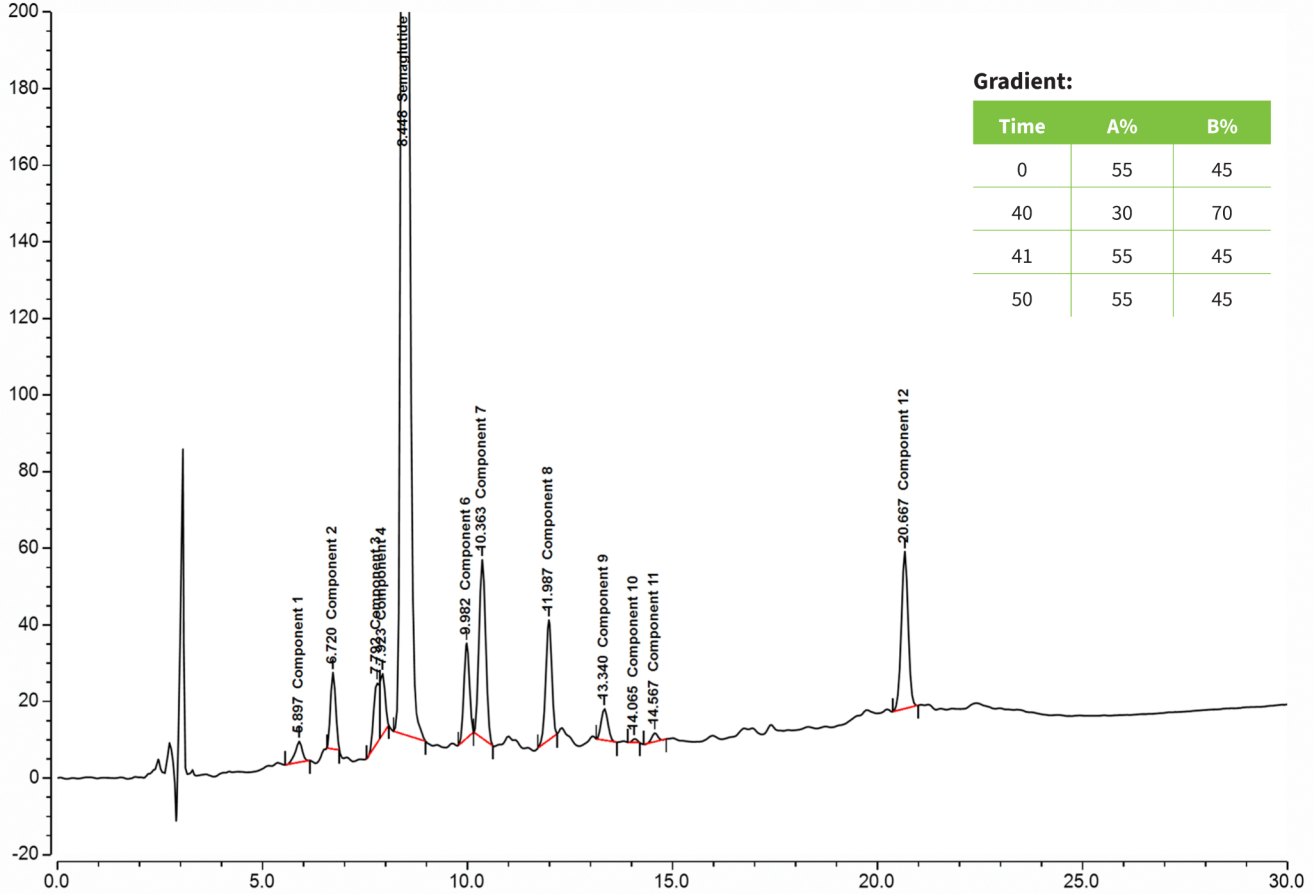




Semaglutide

Endurus[®] PEP5 μ m 250X4.6



Gradient:

Time	A%	B%
0	55	45
40	30	70
41	55	45
50	55	45

Test Condition

Column:

Endurus[®] PEP5 μ m 250X4.6

Injection: 20 μ L

Detection: UV 220 nm

Flow Rate: 1.0 mL/min

Mobile Phase A: 1 ml TFA in 1000 ml water

Mobile Phase B: 1 ml TFA in 1000 ml Acetonitrile

Diluent: 50:50 (Water : Acetonitrile)

Gradient: See Table

Temperature: 40°C

Autosampler temperature: 5°C

Sample Preparation:

Dissolve 10 mg of Semaglutide in 10.0 mL Diluent.

Chromatographic data

No.	Compound	Retention Time (min)	Tailing Factor	Resolution
1	Component 1	5.897	0.84	n.a.
2	Component 2	6.72	1.04	2.99
3	Component 3	7.792	n.a.	2.45
4	Component 4	7.923	n.a.	0.22
5	Semaglutide	8.448	1.39	1.21
6	Component 6	9.982	0.99	5.66
7	Component 7	10.363	1.07	1.37
8	Component 8	11.987	0.92	5.7
9	Component 9	13.34	1.1	4.74
10	Component 10	14.065	1.2	2.77
11	Component 11	14.567	0.98	2.04
12	Component 12	20.667	1	21.27

ISO 9001
CERTIFIED

To place an order, call +91-90811 21133, or contact your local Force Scientific distributor:

Force Scientific • 207 & 210-213 The Space • Kunal Cross Road • Gotri, Vadodara, GJ 390021 • www.forcescientific.com

Endurus[®] is a registered trademark of Force Scientific.